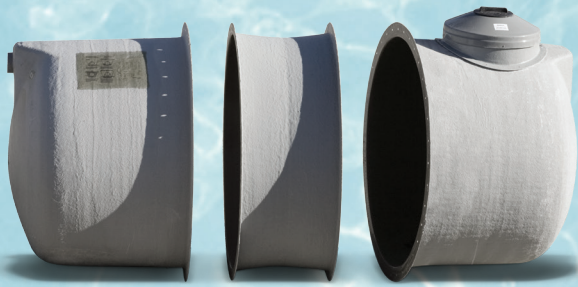


Sectional Fiberglass HOLDING Tanks



Equinox's sectional tanks have the ability to break down and nest together for optimal shipping. Sectional tanks do require field assembly.

A Holding Tank is a single chamber tank without an outlet. Accumulated sewage must be "pumped out" at regular intervals and transported elsewhere for disposal. Tanks come with a child-proof lid, complete with an 8" (203) plastic lid.

5ft Diameter Sectional Fiberglass Tanks

HOLDING TANKS

TANK SPECIFICATIONS					
MODEL	LENGTH A	LENGTH B	INSERTS	CAPACITY OF WORKING CHAMBER	APPROXIMATE SHIPPING SIZE
E-650	84 (2135)	42 (1065)	-	650 (2955)	60 X 42 (1525 X 1065)
E-750	96 (2440)	47 (1194)	-	750 (3410)	60 X 48 (1525 X 1220)
E-1000	120 (3050)	47 (1194)	1	1000 (4545)	60 X 48 (1525 X 1220)
E-1250	144 (3660)	47 (1194)	2	1250 (5680)	60 X 60 (1525 X 1525)
E-1500	168 (4265)	47 (1194)	3	1500 (6820)	60 X 84 (1525 X 2135)
E-1750	192 (4875)	47 (1194)	4	1750 (7955)	60 X 108 (1525 X 2745)
E-2000	216 (5485)	47 (1194)	5	2000 (9090)	60 X 132 (1525 X 3355)

MANHOLE SLEEVES	
LENGTH	SLEEVE REQUIRED
12 (305)	1 X E-MES-12
18 (457)	1 X E-MES-18
24 (610)	1 X E-MES-24
30 (762)	1 X E-MES-30
60 (1524)	1 X E-MES-60
84 (2134)	1 X E-MES-84

A HOLDING TANK IS A SINGLE CHAMBER TANK WITHOUT AN OUTLET. ACCUMULATED SEWAGE MUST BE PUMPED OUT AT REGULAR INTERVALS AND TRANSPORTED ELSEWHERE FOR DISPOSAL.

