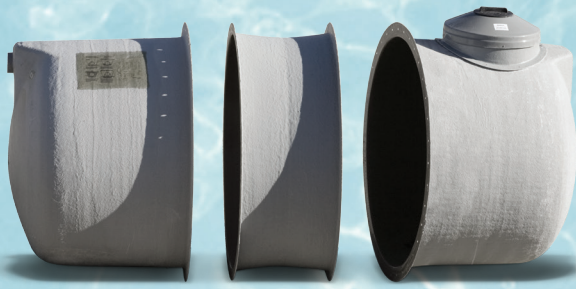


Sectional Fiberglass SIPHON Tanks



Equinox's sectional tanks have the ability to break down and nest together for optimal shipping. Sectional tanks do require field assembly.

A Siphon Tank consists of two chambers separated by an internal divider, with a built in siphon through which effluent is discharged. No sewage pump is necessary, as the siphon works on a gravity flow basis. After initial priming, the siphon regulates the amount of effluent distributed to the field upon each discharge. This allows for even dispersal of effluent throughout the field in sufficient quantities to prevent freezing of the system.

5ft Diameter Sectional Fiberglass Tanks

SIPHON TANKS

TANK SPECIFICATIONS					
MODEL	LENGTH A	LENGTH B	INSERTS	RETENTION CAPACITY OF WORKING CHAMBER	APPROXIMATE SHIPPING SIZE
E-650S2-5	82 (2083)	42 (1067)	-	420 (1910)	60 x 42 (1525 x 1065)
E-750T2-5	93 (2362)	47 (1194)	-	510 (2320)	60 x 48 (1525 x 1220)
E-1000T2-5	118 (2997)	47 (1194)	1	720 (3275)	60 x 48 (1525 x 1220)
E-1250T2-5	142 (3607)	47 (1194)	2	930 (4230)	60 x 60 (1525 x 1525)
E-1500T2-5	167 (4242)	47 (1194)	3	1140 (5180)	60 x 84 (1525 x 2135)
E-1750T2-5	191 (4851)	47 (1194)	4	1350 (6135)	60 x 108 (1525 x 2745)
E-2000T2-5	216 (5486)	47 (1194)	5	1560 (7090)	60 x 132 (1525 x 3355)

MANHOLE SLEEVES	
LENGTH	SLEEVE REQUIRED
12 (305)	1 x E-MES-12
18 (457)	1 x E-MES-18
24 (610)	1 x E-MES-24
30 (762)	1 x E-MES-30
60 (1524)	1 x E-MES-60
84 (2134)	1 x E-MES-84

A SIPHON TANK CONSISTS OF TWO CHAMBERS SEPARATED BY AN INTERNAL DIVIDER, WITH A BUILT IN SIPHON THROUGH WHICH EFFLUENT IS DISCHARGED. NO SEWAGE PUMP IS NECESSARY AS THE SIPHON WORKS ON A GRAVITY FLOW BASIS. AFTER INITIAL PRIMING, THE SIPHON REGULATES THE AMOUNT OF EFFLUENT DISTRIBUTED TO THE FIELD AFTER EACH DISCHARGE. THIS ALLOWS FOR EVEN DISPERSAL OF EFFLUENT THROUGHOUT THE FIELD IN SUFFICIENT QUANTITY TO PREVENT FREEZING OF THE SYSTEM.

