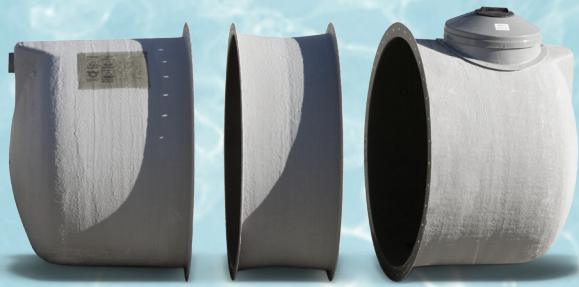


Sectional Fiberglass PUMP-OUT Tanks



Equinox's sectional tanks have the ability to break down and nest together for optimal shipping. Sectional tanks do require field assembly.

A Pump-Out Tank consists of two chambers separated by an internal divider. Effluent is discharged to the field in regulated amounts via a submersible or remotely installed sewage pump, which is controlled by an electronic liquid level switch.

5ft Diameter Sectional Fiberglass Tanks

PUMP-OUT TANKS

TANK SPECIFICATIONS					
MODEL	LENGTH A	LENGTH B	INSERTS	RETENTION CAPACITY OF WORKING CHAMBER	APPROXIMATE SHIPPING SIZE
E-1000P2-5	118 (2997)	47 (1194)	1	720 (3275)	60 x 48 (1525 x 1220)
E-1250P2-5	142 (3607)	47 (1194)	2	930 (4230)	60 x 60 (1525 x 1525)
E-1500P2-5	167 (4242)	47 (1194)	3	1140 (5180)	60 x 84 (1525 x 2135)
E-1750P2-5	191 (4851)	47 (1194)	4	1350 (6135)	60 x 108 (1525 x 2745)
E-2000P2-5	216 (5486)	47 (1194)	5	1560 (7090)	60 x 132 (1525 x 3355)

MANHOLE SLEEVES	
LENGTH	SLEEVE REQUIRED
12 (305)	1 x E-MES-12
18 (457)	1 x E-MES-18
24 (610)	1 x E-MES-24
30 (762)	1 x E-MES-30
60 (1524)	1 x E-MES-60
84 (2134)	1 x E-MES-84

PUMP-OUT TANKS CONSIST OF TWO CHAMBERS SEPARATED BY AN INTERNAL DIVIDER. EFFLUENT IS DISCHARGED TO THE FIELD IN REGULATED AMOUNTS VIA A SUBMERSIBLE OR REMOTELY INSTALLED SEWAGE PUMP, WHICH IS GENERALLY TRIGGERED BY AN AUTOMATIC CONTROL SWITCH.

