

# Polyethylene LEG Tanks



Polyethylene is an FDA (Food and Drug approved) material.  
Polyethylene is resistant to chemical and sewage gas corrosion.  
Pigmented resins retard ultra violet degradation.  
Pigmented resins retard the rate of algae growth.

## Polyethylene LEG Tanks



LR 104

LR 106

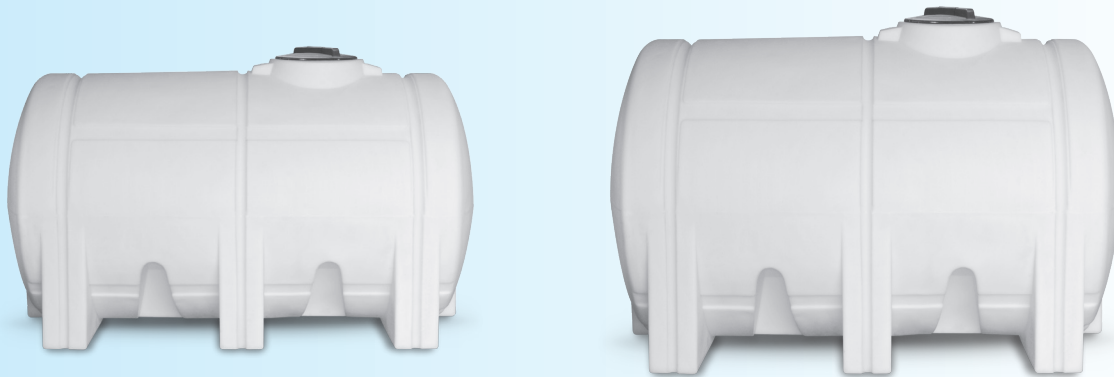
LR 112

LR 126



LR 135

LR 140



LR 145

LR 150

Model	Capacity Imp Gal/Litres	Diameter In./mm	Length In./mm	Lid Type In./mm	Fittings In./mm
<b>LR 104</b>	25 (113)	23" (584)	18" (457)	5"	3/4"
<b>LR 106</b>	50 (227)	23" (584)	37" (939)	5"	3/4"
<b>LR 112</b>	100 (455)	29" (737)	45" (1143)	8"	1 1/4"
<b>LR 126</b>	175 (795)	38" (965)	51" (1295)	8"	2"
<b>LR 135</b>	325 (1475)	42" (1067)	80" (2032)	16"	2"
<b>LR 140</b>	500 (2275)	48" (1220)	83" (2110)	16"	2"
<b>LR 145</b>	750 (3410)	54" (1372)	101" (2565)	16"	2"
<b>LR 150</b>	1000 (4546)	65" (1651)	102" (2591)	16"	2"